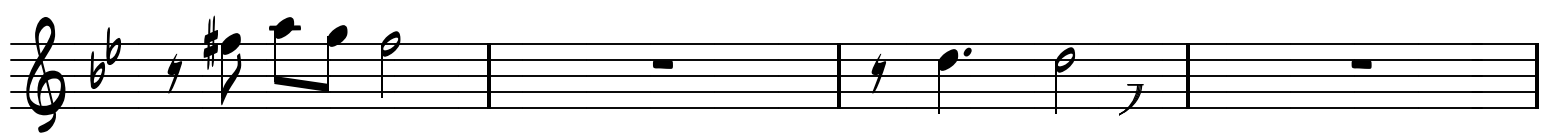
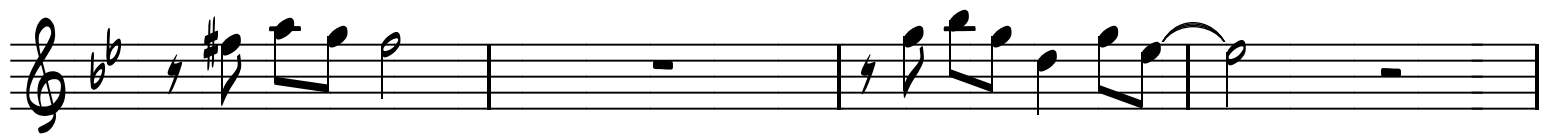
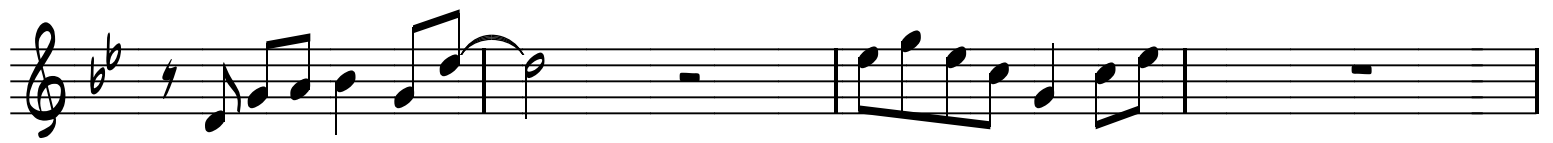
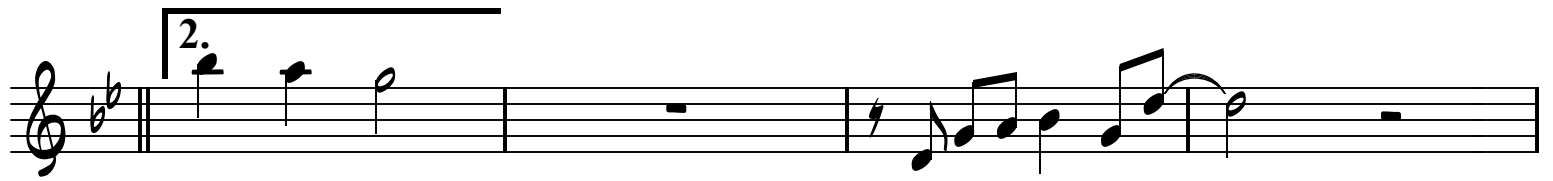
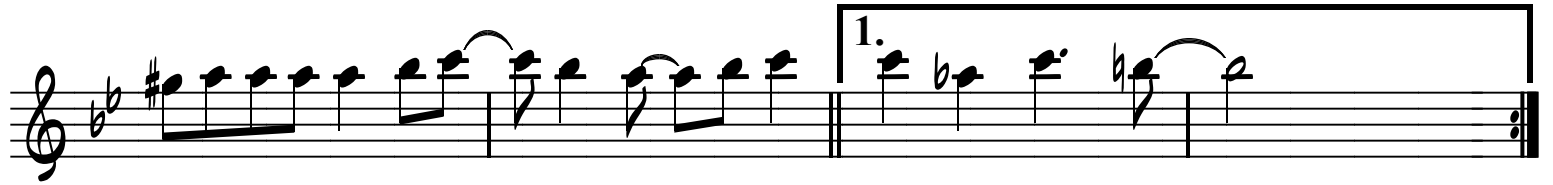
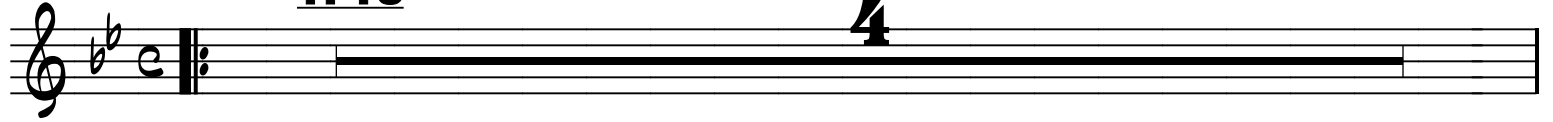


LA PISCINA

SX-T

TPTS

4

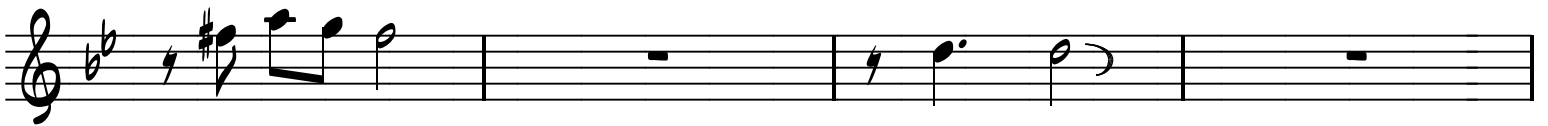
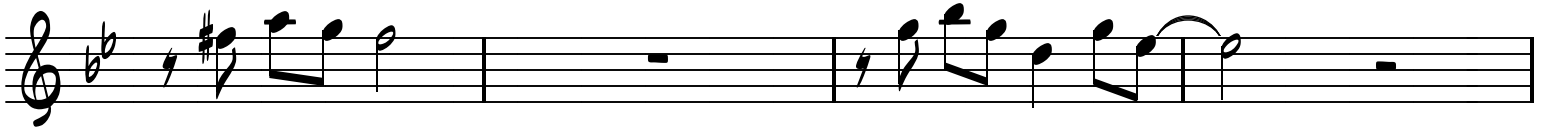
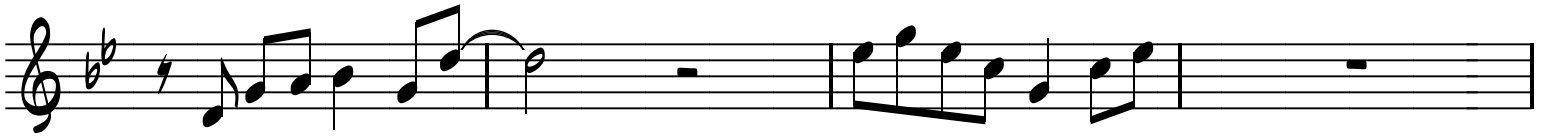


CORO

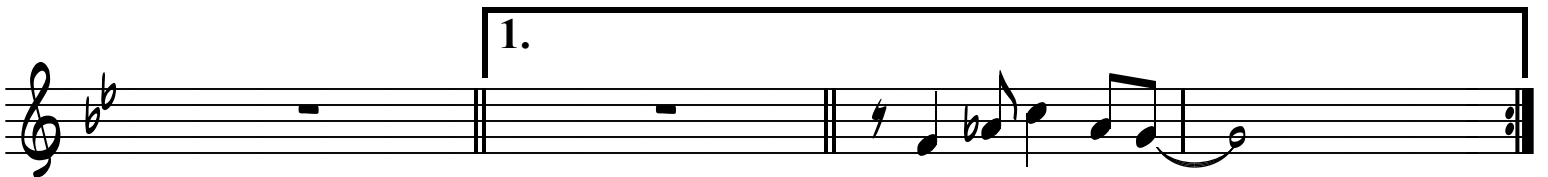
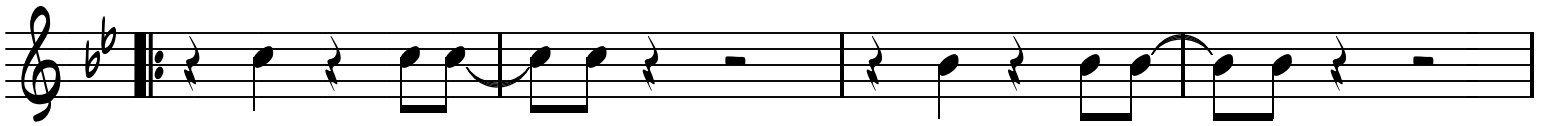
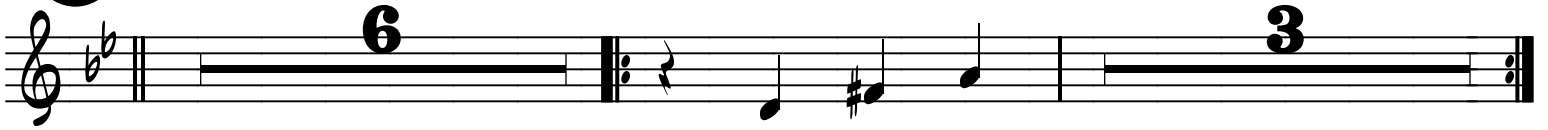
12



2/LA PISCINA/SX-T



VOZ



AL  Y SEGUIR

3/LA PISCINA/SX-T

CORO

Musical staff with a 6-measure rest followed by a 3-measure rest. The notes after the rests are: G4, A4, Bb4, A4, G4.

Musical staff with a melodic line: G4, A4, Bb4, A4, G4, F4, E4, D4.

MAMBO

Musical staff with a mambo melody: G4, A4, Bb4, A4, G4, F4, E4, D4, C4, Bb3, A3, G3, F3, E3, D3, C3.

Musical staff with a mambo melody: G4, A4, Bb4, A4, G4, F4, E4, D4, C4, Bb3, A3, G3, F3, E3, D3, C3.

TPTS

Musical staff with a mambo melody: G4, A4, Bb4, A4, G4, F4, E4, D4, C4, Bb3, A3, G3, F3, E3, D3, C3.

Musical staff with a mambo melody: G4, A4, Bb4, A4, G4, F4, E4, D4, C4, Bb3, A3, G3, F3, E3, D3, C3.

**AL MAMBO
Y SEGUIR**

4Xs

CORO

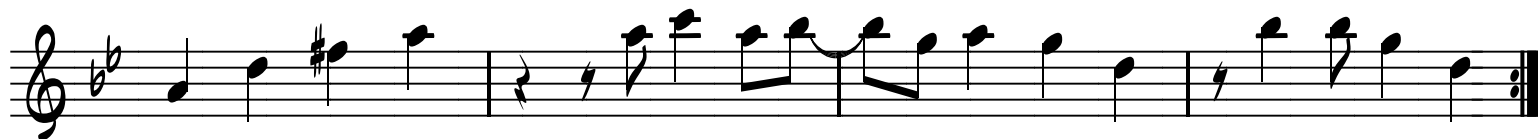
AY AY AY

Musical staff with an 8-measure rest.

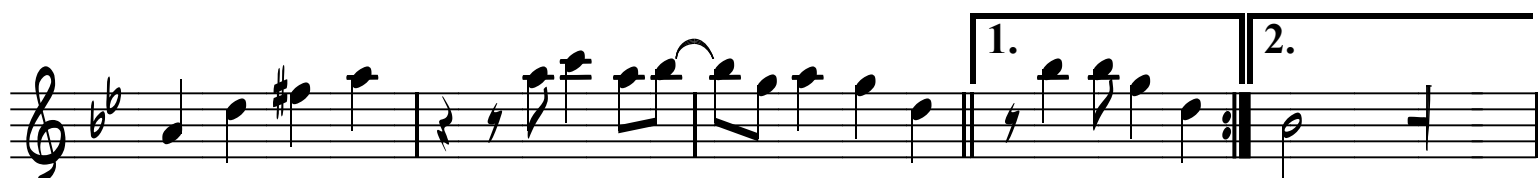
SXS

Musical staff with a melody: G4, A4, Bb4, A4, G4, F4, E4, D4, C4, Bb3, A3, G3, F3, E3, D3, C3.

4/LA PISCINA/SX-T



TPTS



CORO

12

